

Management strategies

How to treat

Gorse is a weed of national significance.

No method alone will give total control of existing gorse plants and subsequent seedlings. A combination of methods must be employed to give long-term success.

1. Treating isolated patches and limited infestations

Whilst the largest thickets may appear the most obvious place to commence works, ideally the smaller, outlying infestations should be tackled first. This allows a greater area of land to be cleaned up first, and follow-up maintenance will be less in these areas as a smaller seed bank is likely to be present.

2. Treating extensive infestations

Mechanical clearing is an ideal method of controlling large infestations of gorse on land that is suitable for sowing down to pasture. Bulldozers with rippers or medium to heavy tractors with dozer blades and rippers attached can be used.

Regrowth of well established gorse bushes after burning or mechanical control is not suitable for herbicide treatment until it is up to 1 m high.

Grazing by sheep is moderately effective for controlling gorse seedlings. After a dense gorse infestation has been removed and the pasture established, it should be subjected to periodic heavy grazing by sheep during the spring and summer to prevent the establishment of gorse seedlings.

In dense gorse stands satisfactory spray coverage is not likely to be obtained beyond a range of 4–5 m. If the stand is larger, access paths should be cleared to allow complete coverage.

With large plants or thickets, a high spray volume, up to 4000 L/ha, should be applied to ensure the entire plant is contacted, not just the outer leaves and stems.

For best results

- When gorse is 1 to 1.5 m tall use Grazon Extra at 250 mL/100 L of water during spring and summer only.
- For plants over 1.5 m tall or during autumn use Grazon Extra at 350 mL/100 L of water.
- If treating in winter, use Grazon Extra at 500 mL/100 L of water. Brownout may not be complete until summer.
- Ensure thorough spray penetration and coverage of the whole plant.

Treatment tips

Always add a 100% concentrate non-ionic surfactant at 100 mL/100 L of water when using Grazon Extra.

Always spray the crown of the plant to ensure coverage of root system.



Gorse

(*Ulex europaeus*)



Grazon[®] Extra

HERBICIDE



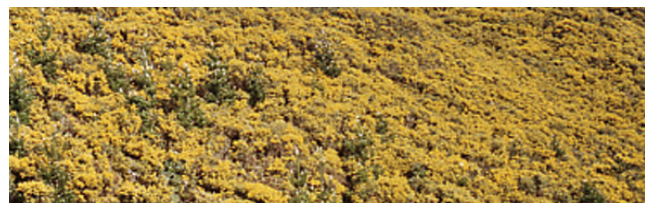
Gorse (*Ulex europaeus*)

Description

Gorse is a woody, deep-rooted perennial legume, capable of growing to 4 m tall. It has numerous small green leaves that form hard spines up to 5 cm long. Bright yellow flowers emerge in autumn and spring and plants produce large quantities of seed. The hard-coated seeds are spread up to 6 m by an explosive opening of the pods in mid summer.

Flowers are bright yellow, pea-like, approximately 20 mm long, and are borne all over the plant. The buds develop during February and March; however, flowering occurs in two distinct seasons,

spring and autumn. Gorse seedlings can be eaten by livestock but mature plants have spines that can cause injury. Gorse is very competitive and reduces the productivity of pasture. Dense infestations restrict movement of livestock and provide a haven for rabbits and other pests.



Timing

As with most weeds, the optimum time for herbicide application is when plants are actively growing. This is generally during spring to early summer, and after the autumn break.

Product	Sep	Oct	Nov	Dec	Jan	Feb	Mar	Apr	May	Jun	Jul	Aug
Grazon® Extra Herbicide	🌀	🌀	✓	✓	✓	✓	🌀	🌀	🌀	🌀	🌀	🌀

KEY:

✓ Best time to spray/treat

🌀 Can spray/treat if conditions are suitable

Herbicides for control of gorse

Product*	Method of application	Rate†	State
Grazon® Extra Herbicide	Foliar spray	250, 350 or 500 mL/100 L of water	All
Garlon® 600 Herbicide	Foliar spray	170 or 340 mL/100 L of water	All
Tordon® 75-D Herbicide	Foliar spray	500 mL/100 L of water	Vic
Tordon® RegrowthMaster Herbicide	Foliar spray	375 mL/100 L of water	NSW, Vic, Tas, SA
Grazon® Extra Herbicide	Aerial (helicopter only)	10 L/ha	Tas
Vigilant® II Herbicide	Cut stump	Apply neat: 3–5 mm layer	All

Note: Preferred product option in bold. † Consult label for details of growth stage and use, especially where range of rates is given. Pulse® is a registered trademark of Nufarm Australia Limited.



CORTEVA[™]
agriscience

For more information call toll free **1800 899 147** or
visit us at **www.woodyweedspecialists.com.au**

Visit us at **corteva.com.au**

™ & Trademarks of Corteva Agriscience and its affiliated companies. © 2021 Corteva.